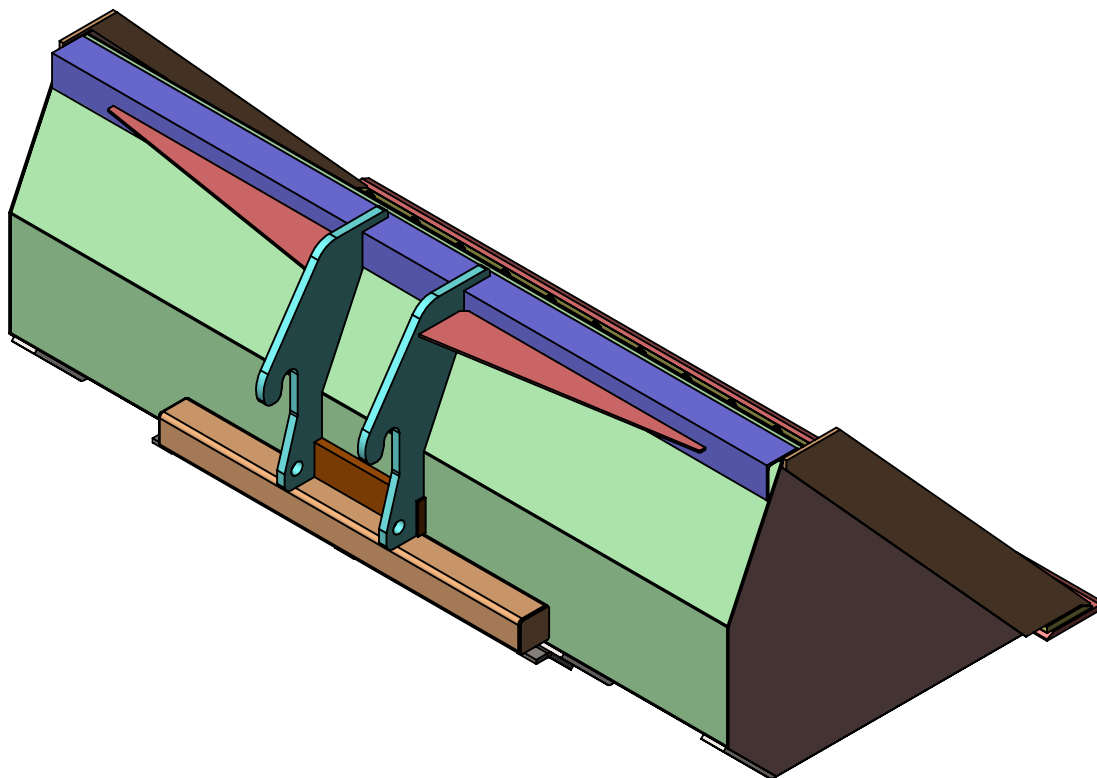


ITEM NO.	PART NUMBER	DESCRIPTION	MATERIAL	QTY
1	1496HC	95" HIGH CAPACITY QUICK-TACH BUCKET	REFER PARTS DETAILS	1
2	1400-22HBTK-ASSY	SKYTRAK HB BUCKET QT ASSY	REFER PARTS DETAILS	1
3	D15993	DBFC 5/8" X 8" X 97 7/8" BLADE W/ 16 HOLES	ASTM A36 STEEL	1
4	BOB-01B	5/8-11 X 2 1/2" UNC PLOW BOLT-GRADE 5	STEEL	16
5	BOB-01N	NYLON INSERT LOCKNUT, 5/8-11 UNC	STEEL	16



**1496HC-TK  
95" HIGH CAPACITY SKYTRAK COMPATIBLE  
QUICK-TACH BUCKET**

UNLESS OTHERWISE SPECIFIED:

DIMENSIONS ARE IN INCHES  
TOLERANCES:  $\pm 1/16$   
FRACTIONAL  $\pm$   
ANGULAR: MACH  $\pm$  BEND  $\pm$   
TWO PLACE DECIMAL  $\pm$   
THREE PLACE DECIMAL  $\pm$

INTERPRET GEOMETRIC  
TOLERANCING PER:

MATERIAL  
REFER PARTS DETAILS

FINISH

DO NOT SCALE DRAWING

NAME DATE

DRAWN HI-TECH 5/27/2019

CHECKED

ENG APPR.

MFG APPR.

Q.A.

COMMENTS:



**STAR INDUSTRIES**

TITLE:  
95" HIGH CAPACITY SKYTRAK  
COMPATIBLE QUICK-TACH BUCKET

SIZE

**A**

DWG. NO.

1496HC-TK- DLR

REV

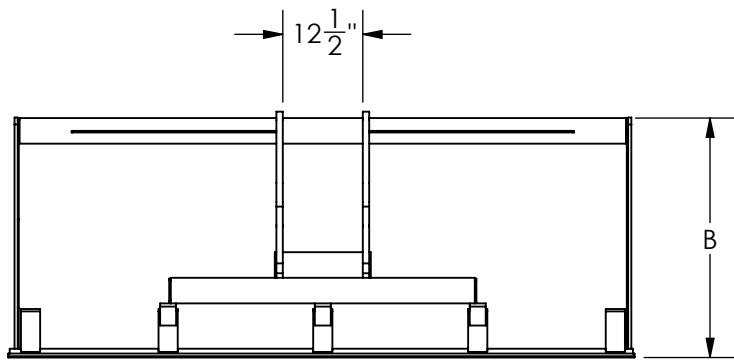
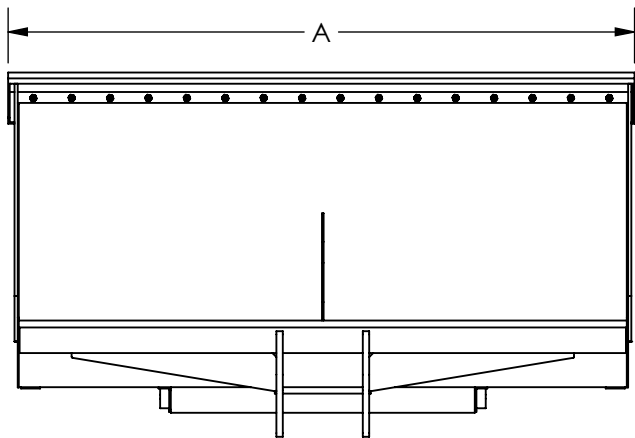
**0**

SCALE:

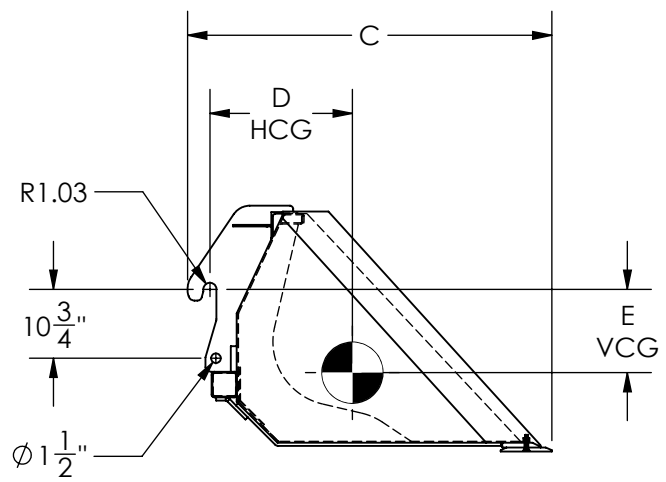
WEIGHT: 1249.10 LBS

SHEET 1 OF 2

**PROPRIETARY AND CONFIDENTIAL**  
THE INFORMATION CONTAINED IN THIS  
DRAWING IS THE SOLE PROPERTY OF  
STAR INDUSTRIES. ANY  
REPRODUCTION IN PART OR AS A WHOLE  
WITHOUT THE WRITTEN PERMISSION OF  
STAR INDUSTRIES IS PROHIBITED.



**1496HC-TK**  
**95" HIGH CAPACITY SKYTRAK COMPATIBLE**  
**QUICK-TACH BUCKET**



MODEL NO	A	B	C	D	E	BUCKET VOLUME	BUCKET LOAD CAPACITY	EMPTY WEIGHT	LOADED HORZ CG	LOADED VERT CG
1496HC-PB1530	97 7/8"	37 1/2"	56 15/16"	22 1/4"	13"	2.0 CYD	6500 LBS	1249.10	18 1/16"	9 3/8"

**ALL SKYTRAKS, MOST JLG TELEHANDLERS MANUFACTURED AFTER OCT 2008, GENIE 6K & 8K , JCB WITH NARROW QUICK-TACH, XTREME MODELS XR842, XR1045, XR1245, XR1055, XR1147, XR1245, XR1255, XR1270, XR1470, SR9244, & SR1054. 12.5" BETWEEN THE EARS**

SIZE <b>A</b>	DWG. NO. 1496HC-TK- DLR	REV <b>0</b>
SCALE: NTS	WEIGHT: 1249.10 LBS	SHEET 2 OF 2