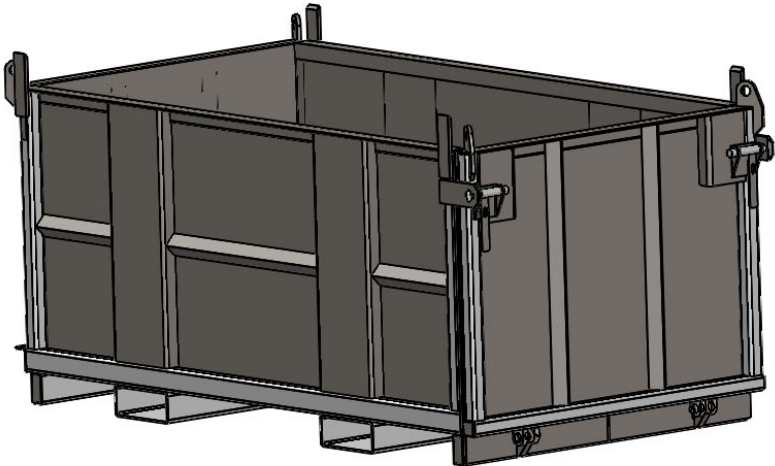
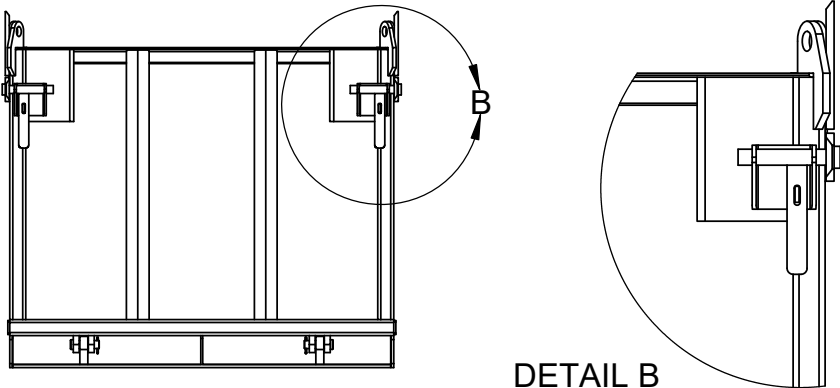


# MODEL 1458 CRANE BOX WITH "DROP DOWN" DOOR



- Engineered to conform to ANS BTH-1 2017 Safety Standard for Below the Hook Lifting Devices.
- Designed to elevate all types of construction material, packaged materials, roof tear-off, debris, scraps, small equipment, and micelleaneous items.
- Features a "Drop Down" Door for easy access to load and unload.
- Material can be wheeled in or carried by hand.
- Fork pockets for handling with a forklift. Accepts forks up to 9" wide and up to 3.25" thick.
- Empty skips can be stacked for storage or transportation up to 3 high. Saves yard space and trucking.
- Simple lockable latches
- Wire rope and shackle rigging optional

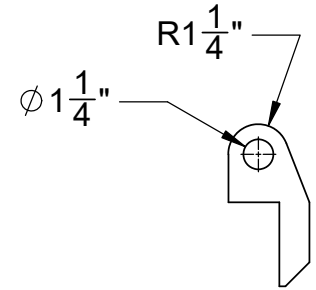
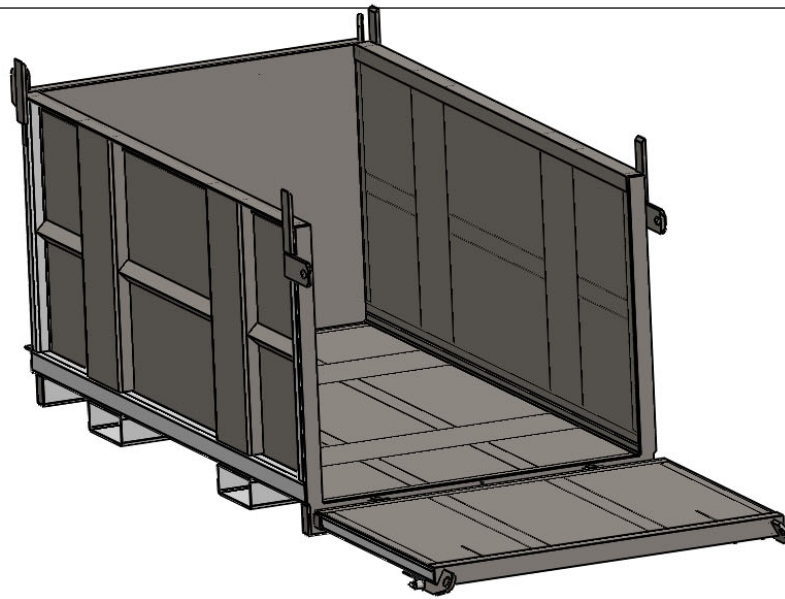
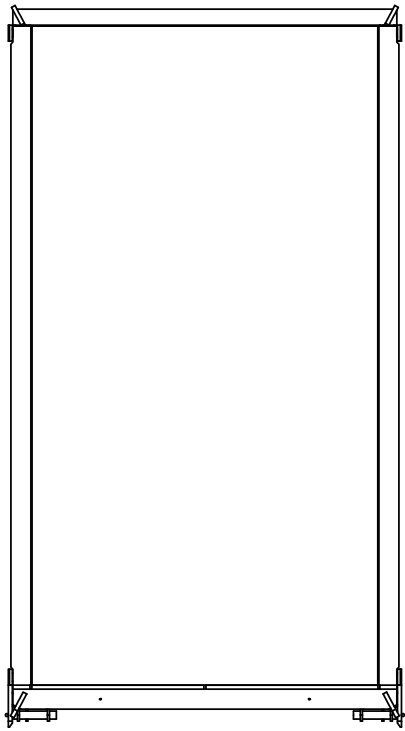


DETAIL B  
SCALE 1 : 12

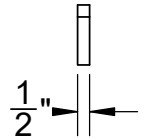
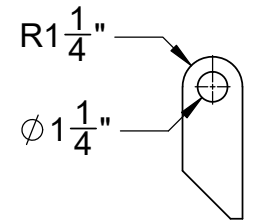
- **Specifications:**
- Maximum Load Capacity 12,000 lbs.
- Volume - 2.75 cu yds.
- Inside dimensions- 43.25" ID width x 82.5" ID length x 36" ID height
- Outside dimensions - 49" wide X 90" long x 40" stacking height
- All steel welded construction - 1/4" plate re-enforcement - 10 ga (approx. 1/8" thick) liner.
- Empty Weight - 1310 lbs.

**PROPRIETARY AND CONFIDENTIAL**  
THE INFORMATION CONTAINED IN THIS DRAWING IS THE SOLE PROPERTY OF <INSERT COMPANY NAME HERE>. ANY REPRODUCTION IN PART OR AS A WHOLE WITHOUT THE WRITTEN PERMISSION OF <INSERT COMPANY NAME HERE> IS PROHIBITED.

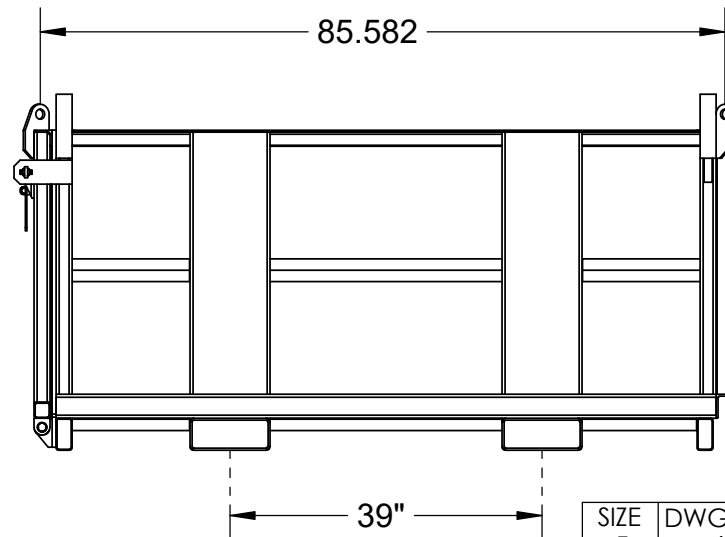
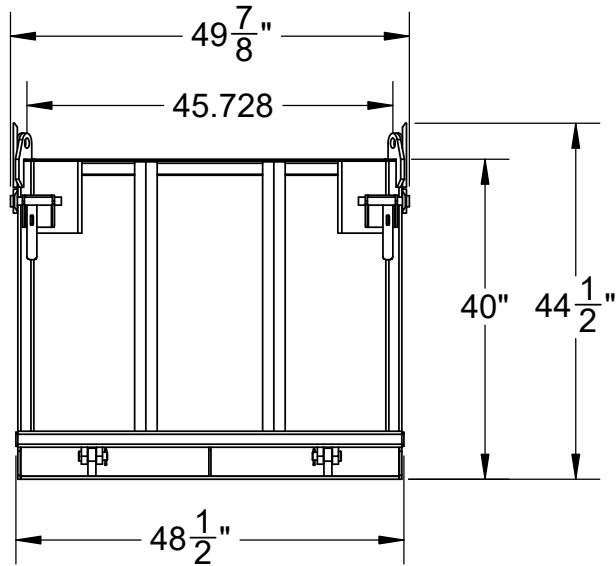
		UNLESS OTHERWISE SPECIFIED:	NAME	DATE	<b>STAR INDUSTRIES</b>	
		DIMENSIONS ARE IN INCHES TOLERANCES: FRACTIONAL ± ANGULAR: MACH ± BEND ± TWO PLACE DECIMAL ± THREE PLACE DECIMAL ±	DRAWN	PK		
		INTERPRET GEOMETRIC TOLERANCING PER:	CHECKED			TITLE: <b>CRANE BOX WITH DROP DOWN DOOR</b>
		MATERIAL	ENG APPR.			
NEXT ASSY	USED ON	FINISH	MFG APPR.			SIZE <b>A</b>
APPLICATION		DO NOT SCALE DRAWING	Q.A.			DWG. NO. 1458 Dealer Dwg
			COMMENTS:			REV
						SCALE: 1:24 WEIGHT: 1311.18 SHEET 1 OF 2



LIFTING LUGS



Shown with door lowered for loading.



SIZE <b>A</b>	DWG. NO. 1458 Dealer Dwg	REV
SCALE: 1:24	WEIGHT:	SHEET 2 OF 2

5

4

3

1