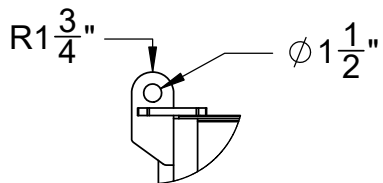


MODEL 1451B EMPTY WEIGHT - 1494 LBS.- LOAD CAPACITY 13,000 LBS.
INSIDE DIMENSIONS 4' X10' X3' HIGH

NOTE: MODEL 1450B SAME EXCEPT EMPTY WEIGHT 1303 LBS. -
LOAD CAP - 9,000 LBS. AND 2' HIGH



PROPRIETARY AND CONFIDENTIAL
THE INFORMATION CONTAINED IN THIS DRAWING IS THE SOLE PROPERTY OF <INSERT COMPANY NAME HERE>. ANY REPRODUCTION IN PART OR AS A WHOLE WITHOUT THE WRITTEN PERMISSION OF <INSERT COMPANY NAME HERE> IS PROHIBITED.

		UNLESS OTHERWISE SPECIFIED:		NAME	DATE
		DIMENSIONS ARE IN INCHES	DRAWN	PK	2/6/15
		TOLERANCES:	CHECKED		
		FRACTIONAL ±	ENG APPR.		
		ANGULAR: MACH ± BEND ±	MFG APPR.		
		TWO PLACE DECIMAL ±	Q.A.		
		THREE PLACE DECIMAL ±	COMMENTS:		
		INTERPRET GEOMETRIC TOLERANCING PER:			
		MATERIAL			
NEXT ASSY	USED ON	FINISH			
APPLICATION		DO NOT SCALE DRAWING			

STAR INDUSTRIES

TITLE:		
SIZE A	DWG. NO. MODEL 1451B Dir Dwg	REV
SCALE: 1:32	WEIGHT: 1494	SHEET 1 OF 2

SIZE A	DWG. NO.	REV
SCALE: 1:32	WEIGHT:	SHEET 2 OF 2

5



4

3

2

1