

HEAVY DUTY SKID-STEER BUCKETS



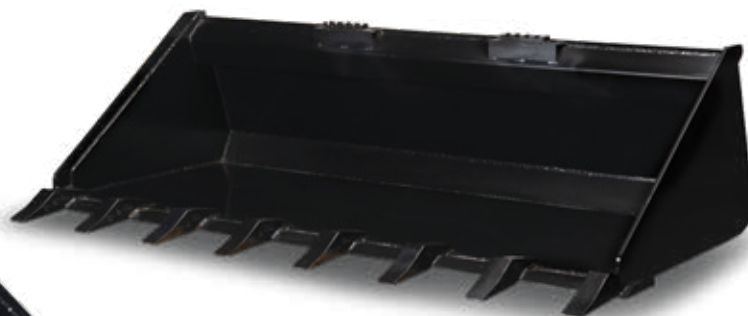
The Star Industry Heavy Duty Skid Steer Bucket is built to last. It's constructed with extra heavy-duty steel, fully-welded seams and reinforced hat section and side blades to strengthen and protect bucket sides. The bucket's bottom is set close to the ground for level 'back dragging' (landscapers love it!).

- ➔ Choose from Standard Heavy Duty Skid Steer Bucket or Extreme Duty XD Bucket with a 25% heavier shell
- ➔ 5 bucket profiles: Low Profile Dirt, Dirt, Utility, Snow & Light Material, Fertilizer and Cotton Seed
- ➔ Available in widths up to 84" wide

AVAILABLE OPTIONS

Punched blade with bolt-on-blade

The reversible $\frac{5}{8}$ " x 8" bolt-on-blade gives 3 times the wear



Heavy-duty teeth

Features 'pin-on' series 23 teeth that measure $2\frac{1}{4}$ " across the point



4101 Garland Drive Fort Worth TX 76117
Phone | 817-485-6073 Fax | 817-428-6008
USA & Canada Toll Free 800-541-1797

www.starindustries.com
Operating Manual and Safety
Information available online.

PRODUCT OPTIONS

FEATURES

Strong Hat Section

Provides unyielding strength across the entire top of bucket.

Steel Side Blades

Strengthens and protects bucket sides.

Seams Fully Welded

Continuous weld inside and outside of shell seams provides greater strength and longer life.

Low Profile Design

Operator can see the leading edge from the seat. Other profiles are also available.

Beveled Hard Carbon Steel Punched Blade on Leading Edge

1/2" x 6" or 3/4" x 6" depending on bucket width.

Buckets Designed to Fit each brand of loader

Even though all new skid-steer loaders use a universal quick-tach they require different bucket profiles for proper operation. Star buckets are built to match your specific make & model of skid-steer loader.

Strong Universal Quick-Tach

Constructed of 3/8" plate steel to stand up to the new more powerful skid-steer loaders.



Heavy (1/2" x 3") Scuff Bars

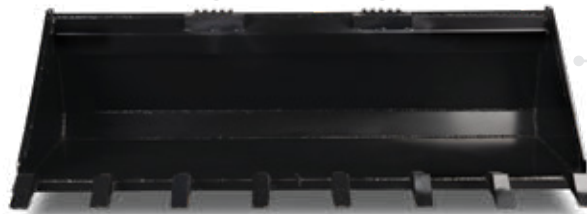
Three to five bars, depending on width, reinforce bucket bottom and protect from excessive wear.

Dual Safety Steps

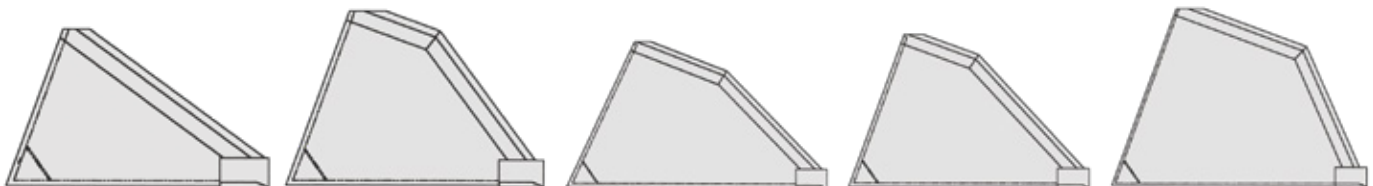
Square Bottom

Permits "back dragging" to level your work. Sets close to the ground. Landscapers love it.

Available option: Heavy-duty teeth



OPTIONAL BUCKET PROFILES



Low Profile Dirt

Utility

Snow & Light Material

Fertilizer

Cotton Seed



4101 Garland Drive Fort Worth TX 76117
Phone | 817-485-6073 Fax | 817-428-6008
USA & Canada Toll Free 800-541-1797

www.starindustries.com

Operating Manual and Safety Information available online.

LOW PROFILE DIRT SKID-STEER BUCKETS BOBCAT / CAT / DAEWOO / KOMATSU / TAKEUCHI / VOLVO / TRAK

Model No.	Width ID in	Width OD in	Height OD in	Depth OD in	Capacity Heaped	Weight
LP22A-60	60"	62 3/8"	20 1/4"	34"	15.0 cuft.	435 lbs.
LP22A-66	66"	68 3/8"	20 1/4"	34"	16.5 cuft.	510 lbs.
LP22A-72	72"	74 3/8"	20 1/4"	34"	18.0 cuft.	560 lbs.
LP22A-78	78"	80 3/8"	20 1/4"	34"	19.6 cuft.	565 lbs.
LP22A-84	84"	86 3/8"	20 1/4"	34"	21.0 cuft.	600 lbs.

CASE / GEHL / JCB / JOHN DEERE / MUSTANG / NEW HOLLAND / THOMAS

Model No.	Width ID in	Width OD in	Height OD in	Depth OD in	Capacity Heaped	Weight
LP29G-60	60"	61 3/8"	20 7/8"	36"	15.6 cuft.	452 lbs.
LP29G-66	66"	68 3/8"	20 7/8"	36"	17.3 cuft.	505 lbs.
LP29G-72	72"	74 3/8"	20 7/8"	36"	19.0 cuft.	559 lbs.
LP29G-78	78"	80 3/8"	20 7/8"	36"	20.6 cuft.	589 lbs.
LP29G-84	84"	86 3/8"	20 7/8"	36"	22.3 cuft.	626 lbs.

LOW PROFILE DIRT SKID-STEER BUCKETS WITH BOLT ON BLADE

BOBCAT / CAT / DAEWOO / KOMATSU / TAKEUCHI / VOLVO / TRAK

Model No.	Width ID in	Width OD in	Height OD in	Depth OD in	Capacity Heaped	Weight
LP22A-60BOB	60"	62 3/8"	20 1/4"	34"	15.0 cuft.	516 lbs.
LP22A-66BOB	66"	68 3/8"	20 1/4"	34"	16.5 cuft.	600 lbs.
LP22A-72BOB	72"	74 3/8"	20 1/4"	34"	18.0 cuft.	658 lbs.
LP22A-78BOB	78"	80 3/8"	20 1/4"	34"	19.6 cuft.	673 lbs.
LP22A-84BOB	84"	86 3/8"	20 1/4"	34"	21.0 cuft.	715 lbs.

CASE / GEHL / JCB / JOHN DEERE / MUSTANG / NEW HOLLAND / THOMAS

Model No.	Width ID in	Width OD in	Height OD in	Depth OD in	Capacity Heaped	Weight
LP29G-60BOB	60"	61 3/8"	20 7/8"	36"	15.6 cuft.	533 lbs.
LP29G-66BOB	66"	68 3/8"	20 7/8"	36"	17.3 cuft.	595 lbs.
LP29G-72BOB	72"	74 3/8"	20 7/8"	36"	19.0 cuft.	657 lbs.
LP29G-78BOB	78"	80 3/8"	20 7/8"	36"	20.6 cuft.	697 lbs.
LP29G-84BOB	84"	86 3/8"	20 7/8"	36"	22.3 cuft.	741 lbs.

LOW PROFILE DIRT SKID-STEER BUCKETS WITH TEETH

BOBCAT / CAT / DAEWOO / KOMATSU / TAKEUCHI / VOLVO / TRAK

Model No.	Width ID in	Width OD in	Height OD in	Depth OD in	Capacity Heaped	Weight
LP22A-60T	60"	62 3/8"	20 1/4"	34"	15.0 cuft.	479 lbs.
LP22A-66T	66"	68 3/8"	20 1/4"	34"	16.5 cuft.	560 lbs.
LP22A-72T	72"	74 3/8"	20 1/4"	34"	18.0 cuft.	610 lbs.
LP22A-78T	78"	80 3/8"	20 1/4"	34"	19.6 cuft.	621 lbs.
LP22A-84T	84"	86 3/8"	20 1/4"	34"	21.0 cuft.	662 lbs.

CASE / GEHL / JCB / JOHN DEERE / MUSTANG / NEW HOLLAND / THOMAS

Model No.	Width ID in	Width OD in	Height OD in	Depth OD in	Capacity Heaped	Weight
LP29G-60T	60"	61 3/8"	20 7/8"	36"	15.6 cuft.	452 lbs.
LP29G-66T	66"	68 3/8"	20 7/8"	36"	17.3 cuft.	505 lbs.
LP29G-72T	72"	74 3/8"	20 7/8"	36"	19.0 cuft.	559 lbs.
LP29G-78T	78"	80 3/8"	20 7/8"	36"	20.6 cuft.	589 lbs.
LP29G-84T	84"	86 3/8"	20 7/8"	36"	22.3 cuft.	626 lbs.



4101 Garland Drive Fort Worth TX 76117
 Phone | 817-485-6073 Fax | 817-428-6008
 USA & Canada Toll Free 800-541-1797

www.starindustries.com
 Operating Manual and Safety
 Information available online.