



FORKLIFT

SELF-DUMP HOPPERS

Operator's Manual



BEFORE USE, READ AND UNDERSTAND THE COMPLETE OPERATOR'S MANUAL.

If you need clarification or any additional information call your Star dealer or call Star Industries @ 1-800-541-1797 during normal business hours.

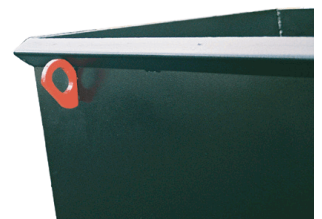
Model	Size	Capacity	Weight
1805N	4,000 lbs.	0.5 cuyd. Narrow	460 lbs.
1810	6,000 lbs.	1.0 cuyd.	645 lbs.
1815	6,000 lbs.	1.5 cuyd.	795 lbs.
1820	6,000 lbs.	2.0 cuyd.	965 lbs.
1825	6,000 lbs.	2.5 cuyd.	995 lbs.

- ⊛ Hopper Safety Lock - a separate lock prevents the hopper from inadvertently dumping when traveling over rough terrain.
- ⊛ Rope Release - permits releasing the latch from the ground or from the operator's seat. Forklift operator can discharge the hopper safely even when it is elevated.
- ⊛ Safety Chain and Locking Grab Hook - secures the hopper to the forklift. Ensures the hopper will not slide off the forks when traveling or dumping.

OPTIONS

Heavy-Duty Casters
Model 1000-0510

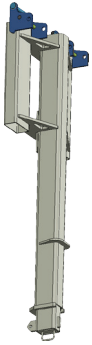
Lifting Hooks
Model 1800-LH



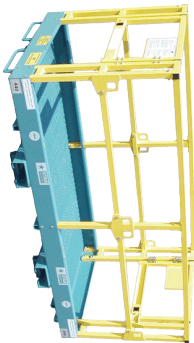
BEFORE USE, READ AND UNDERSTAND THE COMPLETE OPERATOR'S MANUAL.

If you need clarification or any additional information call your Star dealer or call Star Industries @ 1-800-541-1797 during normal business hours.

Customers Who Bought this product also bought



Heavy Duty Jib
 Extend The Reach Of Your Forklift
 Farther. Higher And Over Obstructions



Safety Work Platforms -
 Turn your forklift into an
 Aerial work platform



Concrete Hoppers -
 Turns Your forklift into
 A concrete placer.

Visit www.starindustries.com or call us at 800-541-1797 for more information on these and other great products.

BEFORE USE

1. Inspect Hopper Before Each Use and Before Transporting with a Forklift. Check latch assembly and drum rotation components for damage or excessive wear. Replace latch spring if broken. Replace any other damaged or missing parts. Carefully inspect drum and base for broken welds or damage. Make sure hopper is operating properly. If any abnormality is found, discontinue use until proper repair has been made or it is determined the defect does not effect the safe operation of the hopper.
2. Properly Secure Hopper to Forklift. Make sure forks are inserted fully into hopper base between the two horizontal members. The hopper base should be in contact with the back of the forks. Wrap the safety chain around a strong member of the carriage taking up any excess slack. Hook the chain back onto itself using the grab hook on the end. The open part of the grab hook should be pointing down.
3. Do Not Overload Hopper or Forklift. Make sure the weight of the load does not exceed rated capacity of hopper. Also make sure the weight of the loaded hopper does not exceed the capacity of the forklift as shown on its' load chart at the respective fork position. In addition, make sure hopper load will discharge freely. If material hangs up in hopper when discharging, it can cause an overload situation that may affect forklift stability. Do not allow spillage or over-extension of material from hopper.

OPERATING INSTRUCTIONS

1. When Transporting Hopper with Forklift. Make sure Safety Lock is engaged and hopper is properly secured to forklift as described above. Transport hoppers individually, not stacked. Always, observe and practice correct forklift operating procedures as established by your company, the forklift manufacturer, O.S.H.A., and all other federal and state regulatory agencies.

WARRANTY PROCEDURE:

Upon notification, Star Industries will advise if the product will need to be returned to Star Industries for inspection and/or repair, or If the Star Dealer, or other entity, can be authorized to make the inspection/repair at their location, or if circumstances dictate other solutions. Dealer or other entity repairs must have prior written authorization. A "cost of repair" estimate will be required prior to authorization. Reimbursement will be at the current "Star Warranty Labor Rate" and will not include reimbursement for off-site travel. A Warranty Claim Form must be submitted within 45 days of warranty repair authorization to receive credit for repair. A return authorization number must be obtained from Star Industries before a product can be returned for inspection and/or warranty and that number must appear on the return shipping label. Upon inspection, Star Industries will determine if the product is defective and if so, whether it will be repaired or replaced. Repair or replacement is at the discretion of Star Industries. Transportation charges to Star Industries are not covered under the warranty and must be prepaid by dealer or customer unless it is within the first two years of warranty. In which case, if evidence acceptable to Star Industries, is provided that the product is defective and the return is from within the continental United States or Canada, Star will arrange for return shipment at Star Industries expense. Products found to be defective within the initial two year period and returned to Star Industries for repair or replacement will be returned to the dealer or customer freight prepaid providing it is within the continental United States or Canada. Warranted products to be shipped outside the United States or Canada and those warranted after the initial 2 years will be shipped freight collect. Unwarrantable products will be returned freight collect at the request of the dealer or customer, otherwise they will be destroyed.

LIMITATION OF DAMAGES:

Star's obligation under this warranty shall not include costs of installation, duty, taxes or any other charges whatsoever or any liability for direct, indirect, incidental or consequential damages or delay. Star's liability for any and all losses and damage to purchaser resulting from any cause whatsoever, including negligence or breach of form of warranty, express or implied by Star, alleged damage for defective goods, irrespective of whether such defects are discoverable or latent, shall in no event exceed the purchase price of the particular goods. Products repaired or replaced under this warranty are warranted only for the remainder of the original warranty. Any improper use including operation after discovery of defective or worn parts not approved by Star or any alteration or repair by others in such manner as in Star's judgment affects the product materially and adversely shall void this warranty.

THE FOREGOING WARRANTIES ARE EXCLUSIVE AND ARE IN LIEU OF ALL OTHER WARRANTIES (WHETHER WRITTEN, ORAL OR IMPLIED) INCLUDING WARRANTIES OF MERCHANTABILITY AND WARRANTY OF FITNESS FOR A PARTICULAR PURPOSE.

STAR INDUSTRIES LIMITED WARRANTY

Star Products are warranted to the original purchaser against defective workmanship and/or materials (when properly installed, used, and maintained) for a period as specified below from date of delivery to the customer by an authorized Star Dealer or direct from Star Industries. This warranty does not cover misuse, abuse, normal wear and tear, or accidental damage.

5 year Warranty:	All Star products except as noted below. (Includes HD Auger Drives & most non-hydraulic products)
2 year Warranty:	Medium Duty Auger Drives
1 year Warranty:	Auger Bits and Auger Accessories (excludes auger drives), Crane Forks, Grapples, Angle Broom, Self Dumping Hoppers, Replacement Forks, and Over the Bucket Forks
6 month Warranty:	Concrete Mixers

WARRANTY CLAIM NOTIFICATION:

Product defects should be reported to the Star dealer from whom the product was purchased or to Star Industries in writing promptly after discovery. Preferably photographs showing the defect should also be provided along with a written report of circumstances involved. Warranty claims not made within 30 days after discovery of the defect shall be null and void.

WARRANTY DETERMINATION:

If a warranty claim is found worthy and made within the warranty period we reserve the right at our discretion to repair existing defects or to replace it with the same or current model free of charge or to issue a credit for the reasonable cost of repair or take possession of the equipment and issue reimbursement for the calculated value.

2. When Hopper is Idle. Make sure casters (if so equipped) are locked so it cannot roll and that the Hopper Safety Lock is engaged to prevent hopper from accidentally tripping. Store safety chain on hook when not in use.
3. When Dumping the Load. Make sure the operator and all personnel are clear of the hopper rotation path and clear of falling material. To discharge hopper, disengage safety lock, then trip hopper with release handle or with rope release. Note: Hopper is designed to work by changing the center of gravity of the hopper and its load. Therefore, it may be necessary to tilt forks forward or backward to release the friction tension on the hopper latch before latch can be released. In addition, it may be necessary to tilt forks forward to complete the dumping operation.
4. Re-Latching Hopper. Normally the hopper will return to latched position upon becoming empty. However, if it does not, tilt forks back until hopper latches. Check to make sure hopper is properly latched and then engage safety lock before transporting.
5. Observe All Safety Regulations. Conform to all federal, state, and company safety regulations. Make sure forklift operator has been properly trained and is certified in accordance with O.S.H.A and A.N.S.I.

HOPPER MAINTENANCE

Lubricate latch hinge bolt, latch hook and hopper lock hinge bolt with oil or grease when needed. This hopper should receive proper maintenance at all times to assure it is in safe working condition. Inspect hopper regularly for broken welds, wear and damage. Repair or replace defective components as needed.

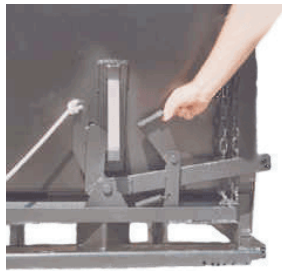
SAFETY FEATURES

SAFETY CHAIN & LOCKING GRAB HOOK



Secures hopper to forklift and prevents hopper from accidentally sliding off forks.

SAFETY LOCK



Prevents accidental discharge when transporting a load. Must be disengaged before hopper will dump..

RELEASE HANDLE



At the back of hopper can be used to dump the load or . . .

ROPE RELEASE



Can be used to trip the hopper from the ground or from the operator's seat.

*Never dump hopper unless secured to Forklift

OPTIONS

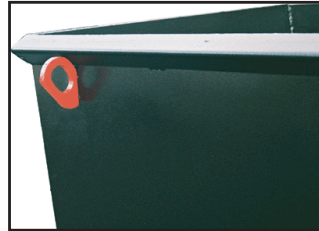
Heavy-Duty Casters Model 1000-0510

Star Self-Dumping Hoppers are available with Heavy-Duty Steel Casters and 8" diameter Polyurethane Wheels with Roller Bearings. The combination of the larger wheel size, roller bearings, and the polyurethane tire material makes it easier to push the hopper over trash and foreign objects. Rear wheels swivel for easy maneuverability. Casters are bolted to hopper (not welded) so they can be easily replaced if damaged.



Lifting Hooks Model 1800-LH

Optional Lifting Hooks (eyes) are available for handling hoppers with a crane. A hook is welded to each corner of the hopper. Shackles should be used to attach slings to hooks. Heavy duty hooks are designed to handle the weight of empty hopper plus its full rated load capacity.



Please Note:
Hopper cannot be discharged while suspended with a crane.

MODEL	CAPACITY	WEIGHT CAPACITY (W/O CASTERS)	BASE DIMENSIONS	TOP DIMENSIONS	OVERALL HEIGHT (W/O CASTERS)	WEIGHT (W/O CASTERS)	FORK OPENING WIDTH	FORK OPENING HEIGHT
1805N	½ cuyd.	4,000 lbs.	42" x 32"	49" x 32"	36"	460 lbs.	23 ½"	2 ¾" ID
1810	1 cuyd.	6,000 lbs.	48" x 39"	62" x 39"	39"	645 lbs.	30 ¼"	2 ¾" ID
1815	1 ½ cuyd.	6,000 lbs.	55" x 43"	67" x 45"	46"	795 lbs.	35 ½"	2 ¾" ID
1820	2 cuyd.	6,000 lbs.	57" x 58"	66" x 57"	48"	965 lbs.	32"	2 ¾" ID
1825	2 ½ cuyd.	6,000 lbs.	57" x 58"	67" x 57"	55"	995 lbs.	32"	2 ¾" ID

* Note:

 Weight capacity of hoppers with casters is 4,000 lbs less the weight of the hopper.
